

Top screen (12 mm hardware cloth or 25 mm chicken wire)

Side view

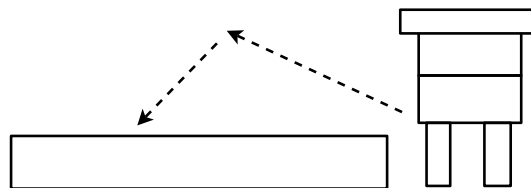
Bottom screen (aluminum fly screen)

Drop-Zone Dead-Bee Trap

1" x 6" x 20" ends

1" x 6" x 40" sides

Top view



Advantages:

- Drainage
- Bees can't blow off
- Protection from scavengers
- Easy to collect bees

Drop-Zone Dead-Bee Trap
(after Porrini, 2002)

R.E.L. Rogers, M.Sc., P.Ag.
Wildwood Labs Inc
June 13, 2008